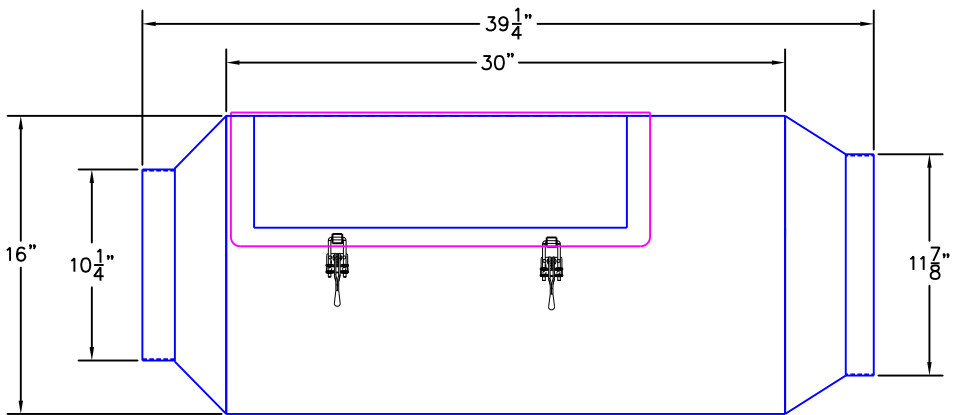
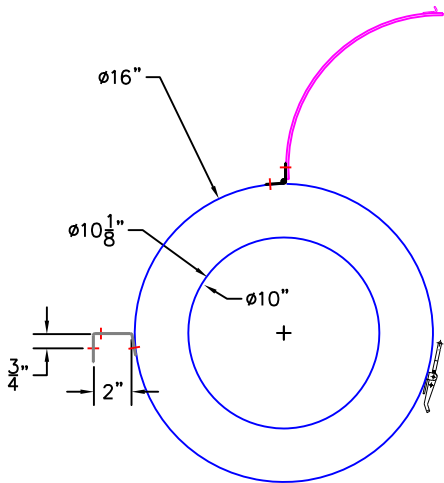



LLS-10-12

STAINLESS STEEL LINT LASSO

RATED MAX. CAPACITY: 1700 CFM
 STATIC PRESSURE: @ 1700 CLEAN
 0.08" S.P. (clean) to 0.25" S.P. (dirty)
 UNIT WEIGHT: 48 LBS.
 MINIMUM 18 GA 304 STAINLESS STEEL
 WELDED CONSTRUCTION



THIS DRAWING AND ALL INFORMATION THEREON IS THE PROPERTY OF TQI INDUSTRIES AND IS SUBJECT TO RETURN ON DEMAND.
 THIS INFORMATION IS CONFIDENTIAL AND MUST NOT BE MADE PUBLIC OR COPIED UNLESS AUTHORIZED.

UNLESS OTHERWISE SPECIFIED XXX + - .005 XX + - .010 X + - .030 FRA. + - 1/32 ANG. + - 1 DG.	TQI, LLC 960 Crossroads Blvd. Seguin, TX 78155 (830)401-4400		CLEAN CYCLE SYSTEMS		
			LINT LASSO		
DRAWN BY HDP	DATE 8/15/13	SIZE A	QTY. REQUIRED 1	DWG NO. LL-10-12-email	REV
CHECKED BY MTR	DATE 8/15/13	SCALE: 1:10	NO	SHEET	1